

H1 USER MANUAL

Introduction

Congratulations and thank you for buying your BDH H1 Shifter. To get the most out of your purchase please review all the content in this document.

Index

- ***Setup***
 - ***Opening the Box...***
 - ***Tensioner***
 - ***Gearstick and Gear Knob***
 - ***Mounting***
 - ***Side-Mounting***
- ***Good to Go!***
 - ***Plug In Your Shifter***
 - ***Configure In Game***
- ***Maintenance***
- ***Base Plate Dimensions***

Help Videos

Register at www.bdhracesim.com to access our support video series

Contact Us

If you need to contact us at any point, email info@bdhracesim.com

Setup

Let's get you going!

Opening the Box...

To begin with, remove the shifter from its box.

The shifter is heavy, so please be careful removing it from the packaging.

We advise placing the box on its side and pulling the shifter by the lower clamps while holding the box with your other hand, the shifter should slide out.

Remove the Gear Stick, Fitting Kit, Thumbwheel and USB-C Cable.



Box Contents

- H1 shifter -**
- Gear stick (with knob) -**
- Thumbwheel -**
- USB-C Cable -**
- Fitting kit -**

Tensioner

The thumbwheel is used to adjust the spring pressure in the detent mechanism.

It screws into the protruding cylinder as shown.

Turning the thumbwheel clockwise will give a heavier feel, but please note:

Prolonged use of the shifter with the tension set at extremely high levels will cause premature wear on internal components and may constitute improper use (see warranty information).

Therefore, set the tension to a comfortable level, as you would expect in a real car.



Gearstick and Gear Knob

To attach the gearstick, first screw it in place lightly by hand.

Put the shifter into neutral and apply some tension with the thumbwheel so that the gearstick sticks up straight.

Brace* the lower gearstick part with a 19mm spanner and tighten the gearstick against it with a 10mm spanner. (You may wish to apply tape to the inside of the spanners to avoid scratching the black finish).

***IMPORTANT: do not twist the lower gearstick part as this can damage internal components.**

If you ever wish to change the gear knob, the knob uses an M10 x 1.5mm thread, the same as many aftermarket gear knobs.

To remove the knob, brace the gearstick with a 10mm spanner and unscrew the gear knob by hand.

Reverse this process when attaching your new knob; ensure that you do not twist the gear stick while doing so.

Any gear knob in excess of 250g will void the warranty of the shifter. Contact us if you are unsure.



Mounting

The shifter is generally mounted directly to aluminum profile.

Using the fixings from the fitting kit provided.

Insert the T-nuts into the profile slots and mount the shifter to the aluminum profile.

Once the holes on the base of the shifter are aligned with the nuts, insert the bolts with washers and fasten down the shifter with a 13mm spanner.



Side-Mounting

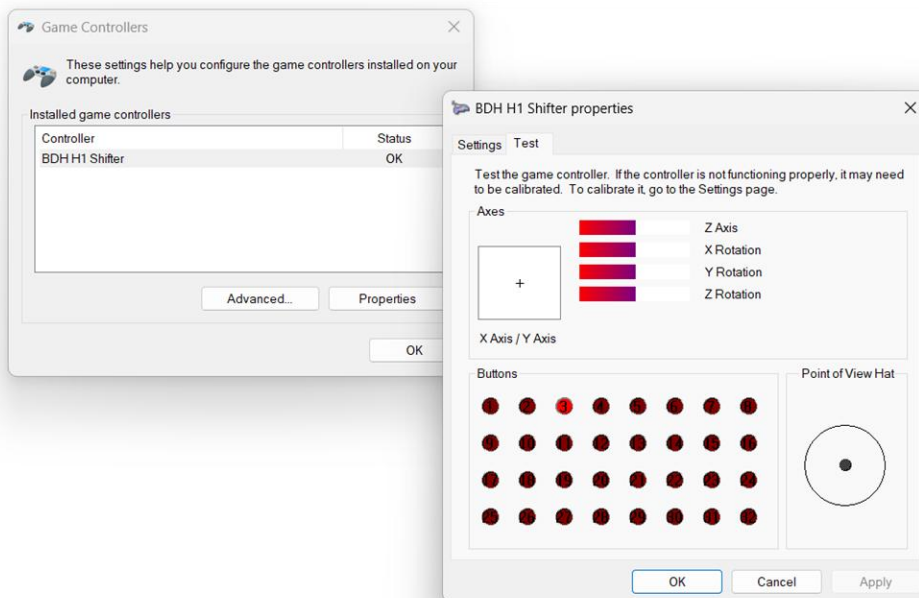
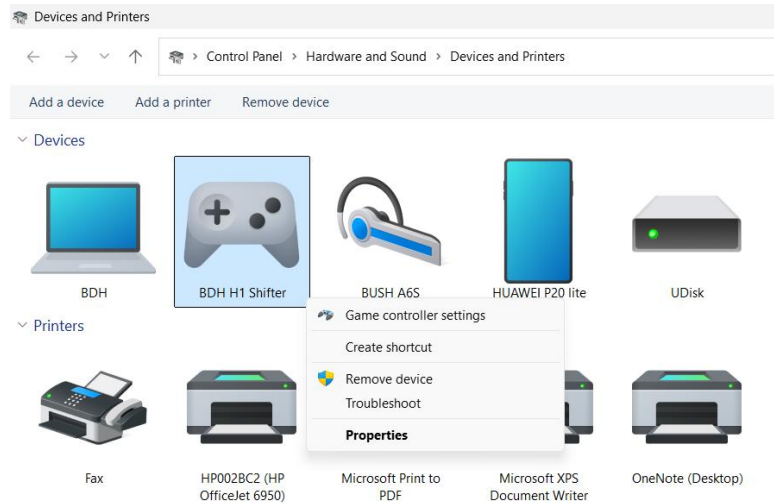
If you wish to side-mount your shifter, first remove the Top Clamps and 'Anti-Rotation Bobbin' with a 3mm and 2.5mm Allen key respectively.

Flip the orientation of the electronics tray 180 degrees, and rotate the shifter 90 degrees on its stand, as shown.

Re-attach the 'Anti-Rotation Bobbin' in the uppermost hole which has now been exposed and refit the top clamps.

The shifter can now be side-mounted to the right-hand side of your rig in 'forward' orientation, or to the left-hand side in 'reverse' orientation.



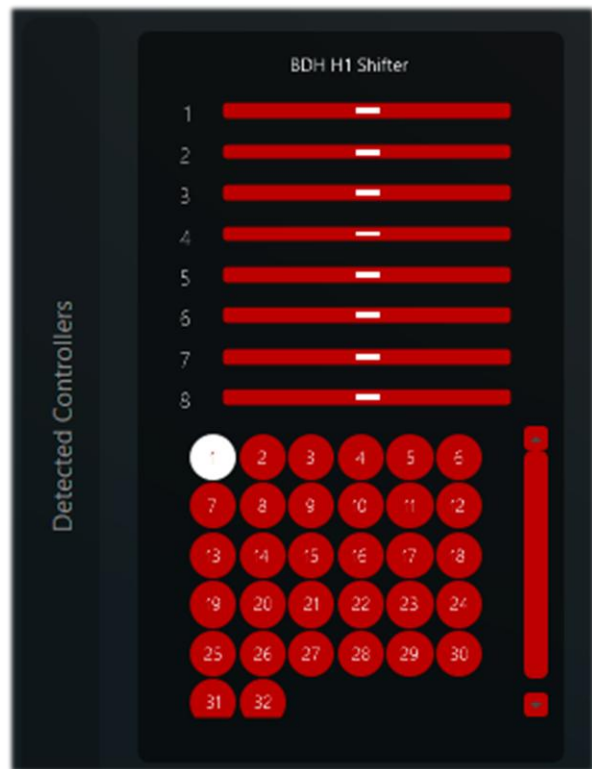


Good to go!

Plug In Your Shifter!

Switch on your PC and once Windows is loaded:

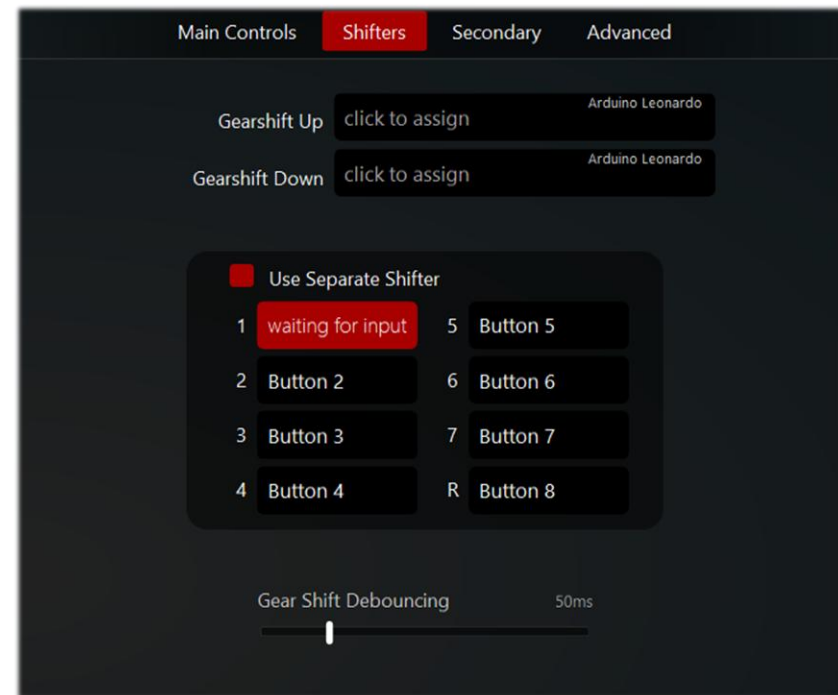
- 1. Plug in the shifter and wait for Windows to recognise and install drivers.**
- 2. Go to Control Panel > Hardware and Sound > Devices and Printers > View More Devices > More Devices and Printer Settings.**
- 3. Right click on 'BDH H1 Shifter' and select 'Game Controller Settings'. (Alternatively, search for 'Set Up USB Game Controllers' to open this same menu).**
- 4. Select the shifter and click 'Properties'. Put the shifter into the different gears, here you will be able to see all 8 gears registered as button inputs 1-8.**
- 5. Note: two of the gears, 7&8, are beyond the far tension gate, so to access these you need to apply additional lateral force (all the way right or left depending on the way the shifter is mounted) and then selecting up or down. (There is no need to pull on the gearstick vertically to get into these gears).**



Configure In Game

Now you have the shifter mounted, and it has been recognised by Windows, configure the shifter in game.

- 1. Launch your chosen game.**
- 2. Access Game Controllers.**
- 3. Setup Gear Shifter.**
- 4. Map each gear to game inputs by selecting the 8 gears.**



Maintenance

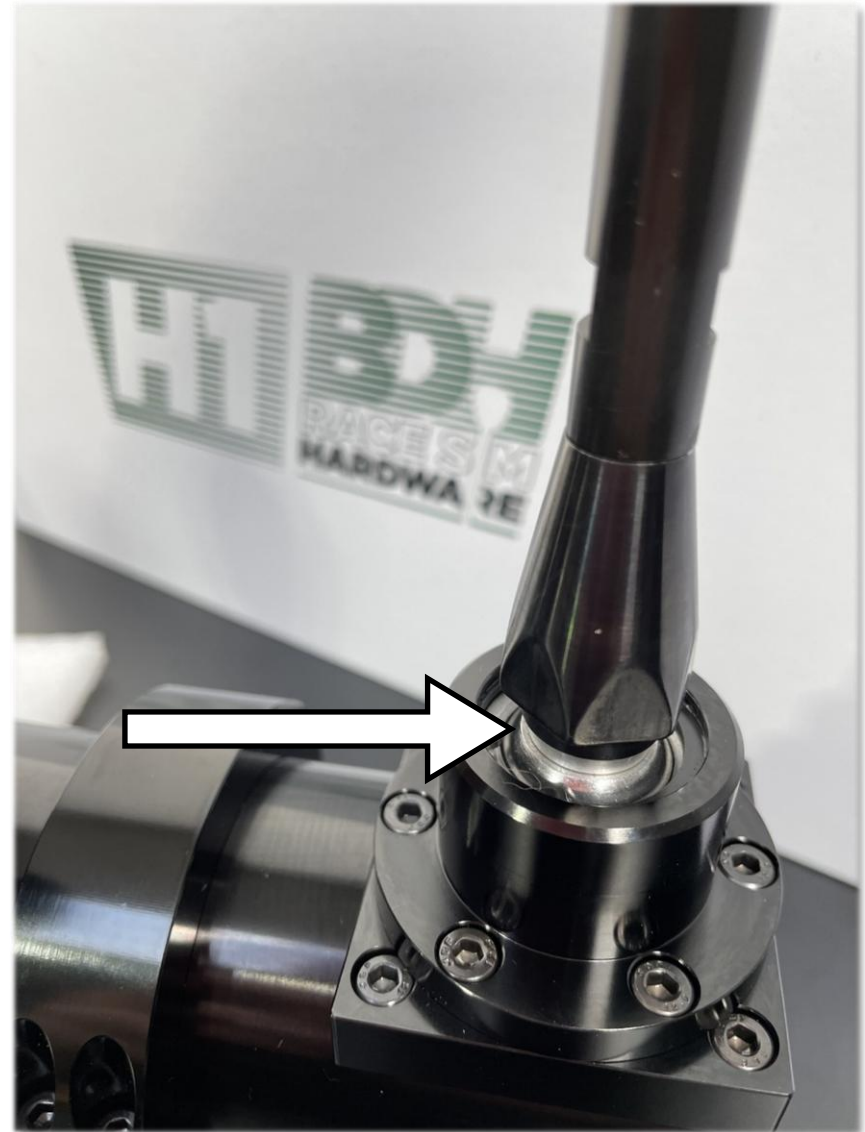
The shifter is built for speed and durability, but like any car part it can perish if abused or not looked after.

The shifter is shipped pre-lubricated; we only recommend adding some grease into the top of the ball joint in the lower gear stick housing:

If it looks like the lubrication has dried, the ball joint feels rough or it has been over a year since last adding lubrication after regular use, we recommend smearing a tiny amount (half a pea) of lithium-based grease onto the top of the joint and moving through the gears to distribute the grease.

We also recommend regular dusting and cleaning of the shifter

Re tighten all the bolts on your sim rig, including the shifter bolts mounting your shifter regularly.



Base Plate Dimensions

